

# HULL SPRINGS FARM

## AQUATIC SPECIES CHECKLIST

*The following aquatic species are listed by the Virginia Department of Game and Inland Fisheries as known to or likely to occur in Westmoreland County.*

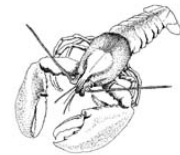
---

### FISH

- Alewife
- Bass, largemouth
- Bass, striped
- Bluegill
- Bullhead, brown
- Carp, common
- Catfish, channel
- Catfish, white
- Chubsucker, creek
- Crappie, black
- Dace, blacknose
- Dace, rosyside
- Fallfish
- Herring, blueback
- Madtom, margined
- Madtom, tadpole
- Minnow, eastern silvery
- Mudminnow, eastern
- Perch, pirate
- Perch, white
- Perch, yellow
- Pickerel, chain
- Pumpkinseed
- Sculpin, Potomac



- Shad, American
- Shad, gizzard
- Shad, hickory
- Shiner, golden
- Shiner, ironcolor
- Shiner, spottail
- Sunfish, bluespotted
- Sunfish, green
- Sunfish, redbreast
- Sunfish, redear
- Warmouth



### CRAYFISH

- Crayfish, common
- Crayfish, Appalachian brook
- Crayfish, devil
- Crayfish, spiny cheek

### MUSSELS

- Mussel, eastern elliptio

### EELS

- Eel, American

### LAMPREYS

- Lamprey, sea