



# Examining Our Budget and Offering A Suggestion

---

By  
Brian Bates

# Revenue Projections

## Background

That's \$24,800,000.00 in real money!

<i>(\$ in millions)</i>	<b>FY10</b>	<b>FY11</b>	<b>FY12</b>	<b>FY13</b>
<b>Total GF</b>	<b>\$ 24.8</b>	<b>\$ 24.0</b>	<b>\$ 24.1</b>	<b>\$ 24.1</b>
<b>Net GF</b>	<b>26.1</b>	<b>23.7</b>	<b>20.6</b>	<b>20.6</b>
<b>*Total Tuition</b>	<b>20.7</b>	<b>22.3</b>	<b>24.0</b>	<b>25.8</b>
<b>Other</b>	<b>1.7</b>	<b>1.7</b>	<b>1.7</b>	<b>1.8</b>
<b>Aux Res'vs XFR</b>	<b>-</b>	<b>-</b>	<b>-</b>	<b>-</b>
<b>Total Revenue</b>	<b>48.5</b>	<b>47.7</b>	<b>46.3</b>	<b>48.2</b>

**\* Assumes 8% Tuition Increase in each of FY11, FY12 and FY13**



# Base Expenditures

## Background

---

	<b>FY10</b>	<b>FY11</b>	<b>FY12</b>	<b>FY13</b>
<b>Salary/Wage</b>	<b>27.7</b>	<b>27.7</b>	<b>27.7</b>	<b>27.7</b>
<b>Fringes</b>	<b>9.5</b>	<b>9.5</b>	<b>9.5</b>	<b>9.5</b>
<b>Operating</b>	<b>9.2</b>	<b>9.2</b>	<b>9.2</b>	<b>9.2</b>
<b>Scholarships</b>	<b>1.0</b>	<b>1.0</b>	<b>1.0</b>	<b>1.0</b>
<b>Debt - Banner</b>	<b>0.4</b>	<b>0.0</b>	<b>0.0</b>	<b>0.0</b>
(\$ millions)	<b>47.7</b>	<b>47.3</b>	<b>47.3</b>	<b>47.3</b>



# Changes to Base Expenditures

## Background

---

	<b>FY10</b>	<b>FY11</b>	<b>FY12</b>	<b>FY13</b>
<b>Reductions</b>	<b>\$ (925)</b>	<b>\$ (961)</b>	<b>\$ (961)</b>	<b>\$ (961)</b>
<b>Util. &amp; Maint.</b>	<b>-</b>	<b>1,000</b>	<b>2,100</b>	<b>3,300</b>
<b>BES Faculty (2)</b>	<b>-</b>	<b>144</b>	<b>144</b>	<b>144</b>
<b>Nursing</b>	<b>-</b>	<b>241</b>	<b>485</b>	<b>485</b>
<b>Other</b>	<b>-</b>	<b>117</b>	<b>121</b>	<b>124</b>
<b>Total</b>	<b>\$ (925)</b>	<b>\$ 541</b>	<b>\$ 1,889</b>	<b>\$ 3,093</b>
(\$ Thousands)				



# Budget Overview

## Background

---

	<b>FY10</b>	<b>FY11</b>	<b>FY12</b>	<b>FY13</b>
<b>Revenue</b>	\$48,522,654	\$47,676,185	\$46,348,944	\$48,246,868
<b>Expenditures</b>	\$46,726,253	\$47,828,835	\$49,177,123	\$50,380,693
<b>Net</b>	\$1,796,401	<b>(\$152,650)</b>	<b>(\$2,828,179)</b>	<b>(\$2,133,825)</b>
8% Tuition Increase in FY11, FY12, FY13				



# Two Other Tuition Scenarios

## Background

---

	FY10	FY11	FY12	FY13
<b>SCENARIO 2: 10.3% Increase FY11, FY12 and FY13</b>				
<i>New net (\$)</i>	1,796,401	350,911	-1,686,931	-338,245
<b>SCENARIO 3: 5.1% Increase Spring 2010 and 8% Increase FY11, FY12 and FY13</b>				
<i>New Net (\$)</i>	1,796,401	1,014,475	-1,537,638	-719,868



How does Longwood compare  
with other Virginia colleges?

---

# Longwood versus state average

2009-10	Longwood	State Average	Longwood/ State
Tuition + E&G	\$4,725	\$5,003	94%
Comp Fee	\$4,200	\$2,980	141%
E&G & Comp Fee	\$8,925	\$7,984	112%
Room & Bd	\$7,596	\$7,658	99%
<b>Total Cost (Residential)</b>	<b>\$16,521</b>	<b>\$15,642</b>	<b>106%</b>

# Top Five Virginia State Schools by Total Residential Cost

2009-10	Tuition E&G	Comp Fee	E&G & Comp Fee	Room & Bd	Total Cost	Percent to Longwood
W&M	\$6,483	\$4,317	\$10,800	\$8,502	\$19,032	115%
VMI	\$5,500	\$5,690	\$11,190	\$6,792	\$17,982	109%
UVA	\$7,873	\$1,799	\$9,672	\$8,290	\$17,962	109%
CNU	\$4,414	\$3,636	\$8,050	\$9,040	\$17,090	103%
Longwood	\$4,725	\$4,200	\$8,725	\$7,596	\$16,521	100%

What is being considered  
elsewhere?



---

# Richmond Times-Dispatch

## Sept. 21, 2009

Terry L. Myers, Chancellor Professor of English,  
College of William and Mary

### Intercollegiate Athletic Fees

- Old Dominion, \$1,074
- Radford, \$1,027
- Longwood, \$2,009
- Norfolk State, \$1,372
- VMI, \$1,298
- William and Mary, \$1,324

### Letters to the Editor, Cont'd

go. Living is a right — and the being fined simply for existing in the country is outrageous. I oppose this ridiculous idea. The correct way to enroll every student on a single-payer system — not a system that forces those whose lives they would lose to participate in a state-organized extortion.

DENNIS HEIDLEBAUGH,  
RICHMOND.

#### We Forgotten to Quickly?

EDWARD "BLUE" HOLMES,  
RICHMOND.

former Richmond firefighter and medic, I was substantially injured by 9/11. The attacks on the Pentagon and the loss of thousands of American lives should not be forgotten.

I cannot express my shock and grief at the lack of acknowledgment by the people of Richmond on the anniversary of that attack. As I put an addendum out in the front of my newspaper that morning, I noticed that there were no other flags displayed in my neighborhood. I thought, "How dare it be so early in the year that there would be many flags displayed as the day went on. It was wrong! When I returned to work I did not see one flag. It is important in hard times to remember the mission. Here are some of the annual (and, often, hidden) athletic fees (courtesy of the State Council of Higher Education, which sees no problem):

- Longwood, \$2,009;
- Norfolk State, \$1,372;
- VMI, \$1,298;
- William and Mary, \$1,324.

Have we already forgotten the vicious and unprovoked attack and the murder of thousands of innocent Americans? Have we forgotten the hundreds of firefighters, police, and other public servants who lost their lives that day?

For those who did remember to display the American flag in remembrance of the events of 9/11, I assure the families of those whose lives were lost would thank you. For those who did not — you should be ashamed.

EDWARD "BLUE" HOLMES,  
RICHMOND.

#### Reallocate College Athletic Funding

EDITOR, TIMES-DISPATCH:  
Like all state agencies, Virginia's public colleges and universities are hurting from cuts in the state's funding.

But the universities could ease their problems — if they wanted to. They have the money; they lack the will to allocate it to their core mission.

Look, for example, at some of the intercollegiate athletic fees charged to each student each year — and then weigh for a moment just how important in hard times football really is to a university's academic mission. Here are some of the annual (and, often, hidden) athletic fees (courtesy of the State Council of Higher Education, which sees no problem):

- Old Dominion, \$1,074;
- Radford, \$1,027;

- Longwood, \$2,009;
- Norfolk State, \$1,372;
- VMI, \$1,298;
- William and Mary, \$1,324.

How about shifting some of this money to academics and asking donors to step up to the plate for athletics? Doing so would lessen the mid-year tuition increases likely to come soon.

TERRY L. MYERS,  
Chancellor Professor of English,  
College of William and Mary,  
WILLIAMSBURG.

#### Will Magic Wand Stop New Cold War?

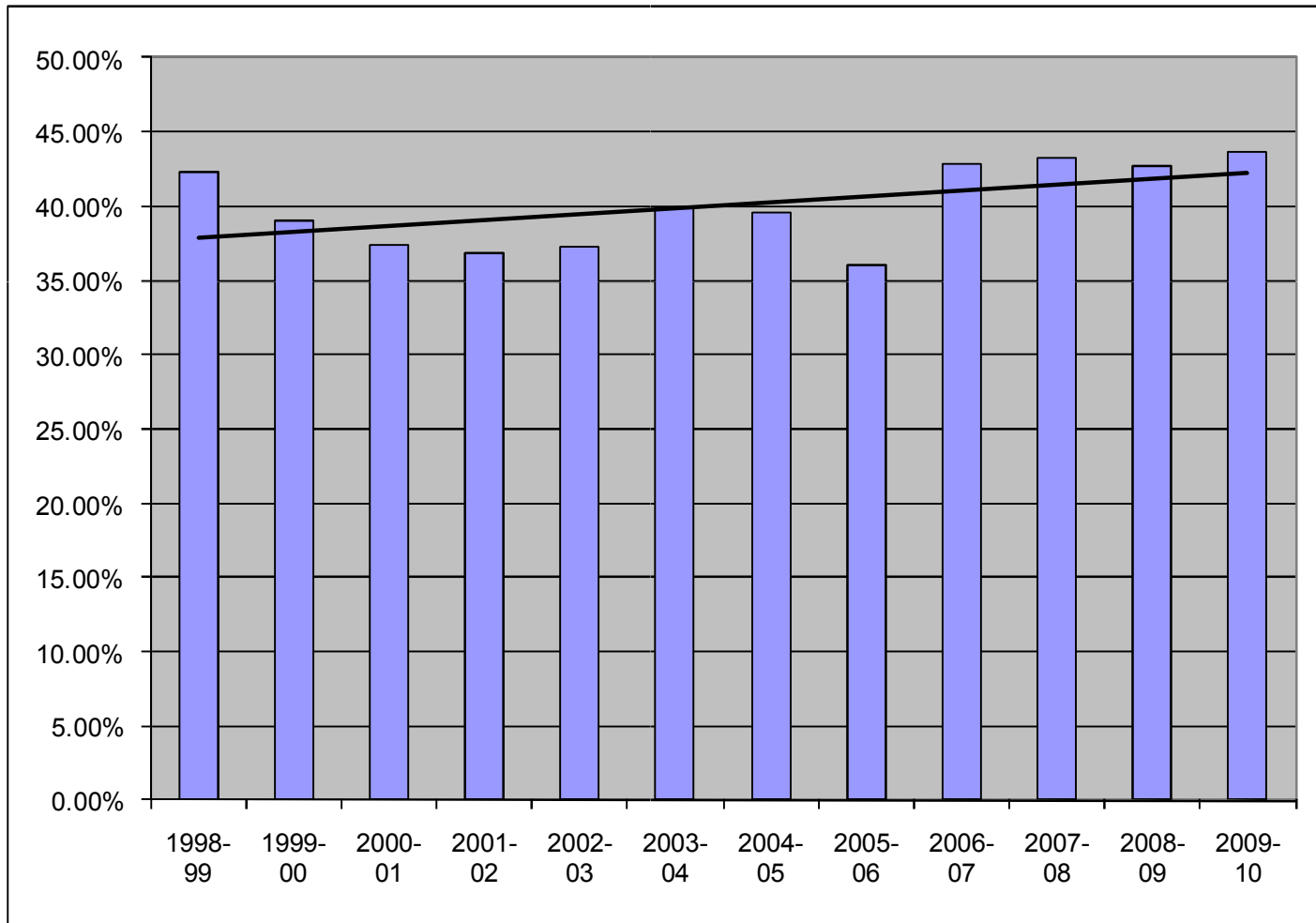
EDITOR, TIMES-DISPATCH:  
Amid pessimistic views on the state of the economy, Americans can find both good news and bad news regarding notions of a new Cold War.

On the bright side is the emergence of an internationally focused Cold War Museum, headquartered in Fairfax, with an important branch in Berlin, Germany. Its honorable goal is to memorialize veterans who paid a heavy price in the protracted struggle against Soviet communism.

On the negative side, unfortunately, is the specter of a repeat performance flowing from Washington's tit-for-tat gamesmanship with Russian Prime Minister Vladimir Putin. During both the Clinton and Bush administrations, Washington had offered Boris Yeltsin and his successor a tall order: Build democracy, American-style, upon

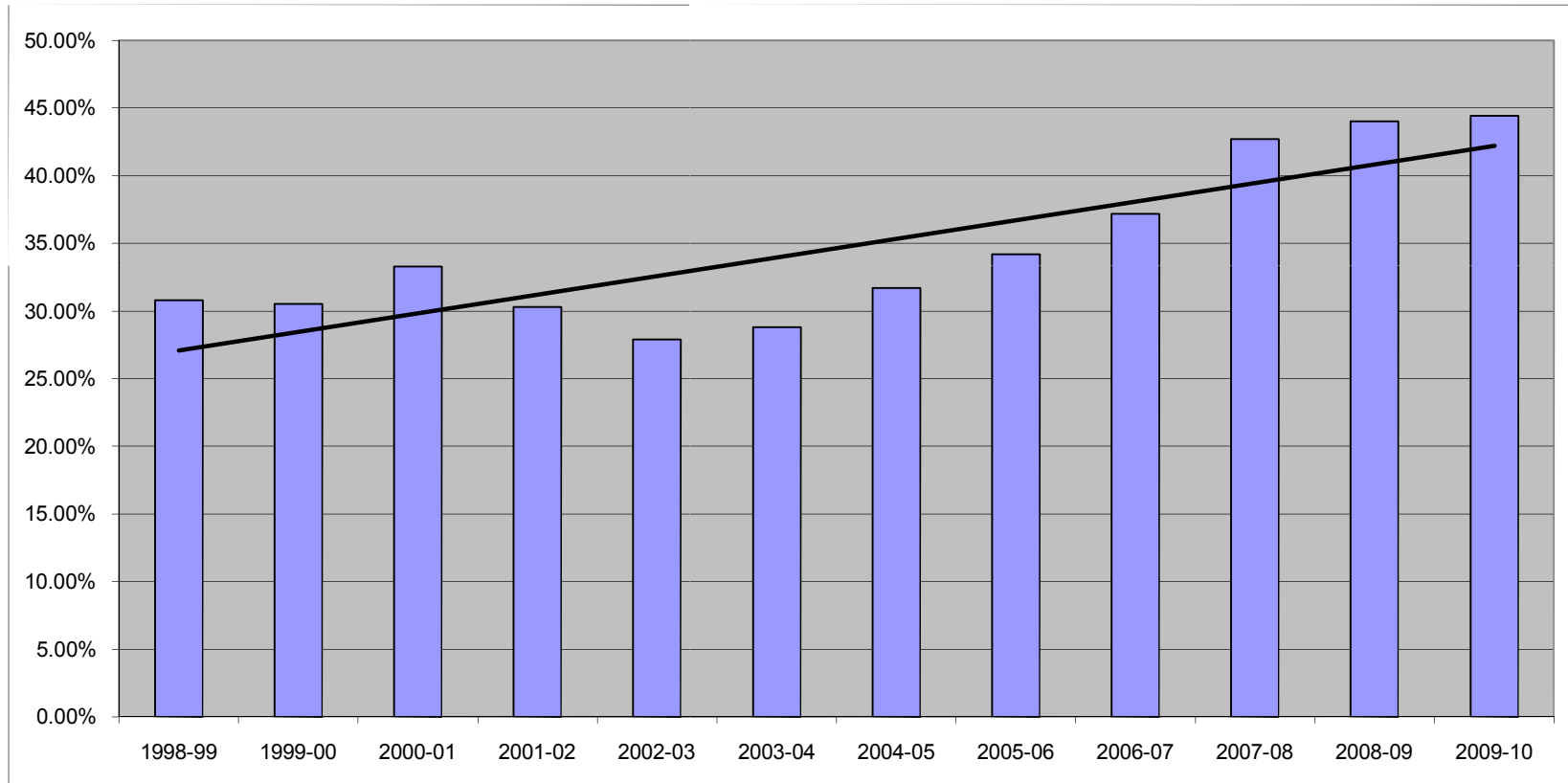
# Instruction

## as a percent of E&G Budget

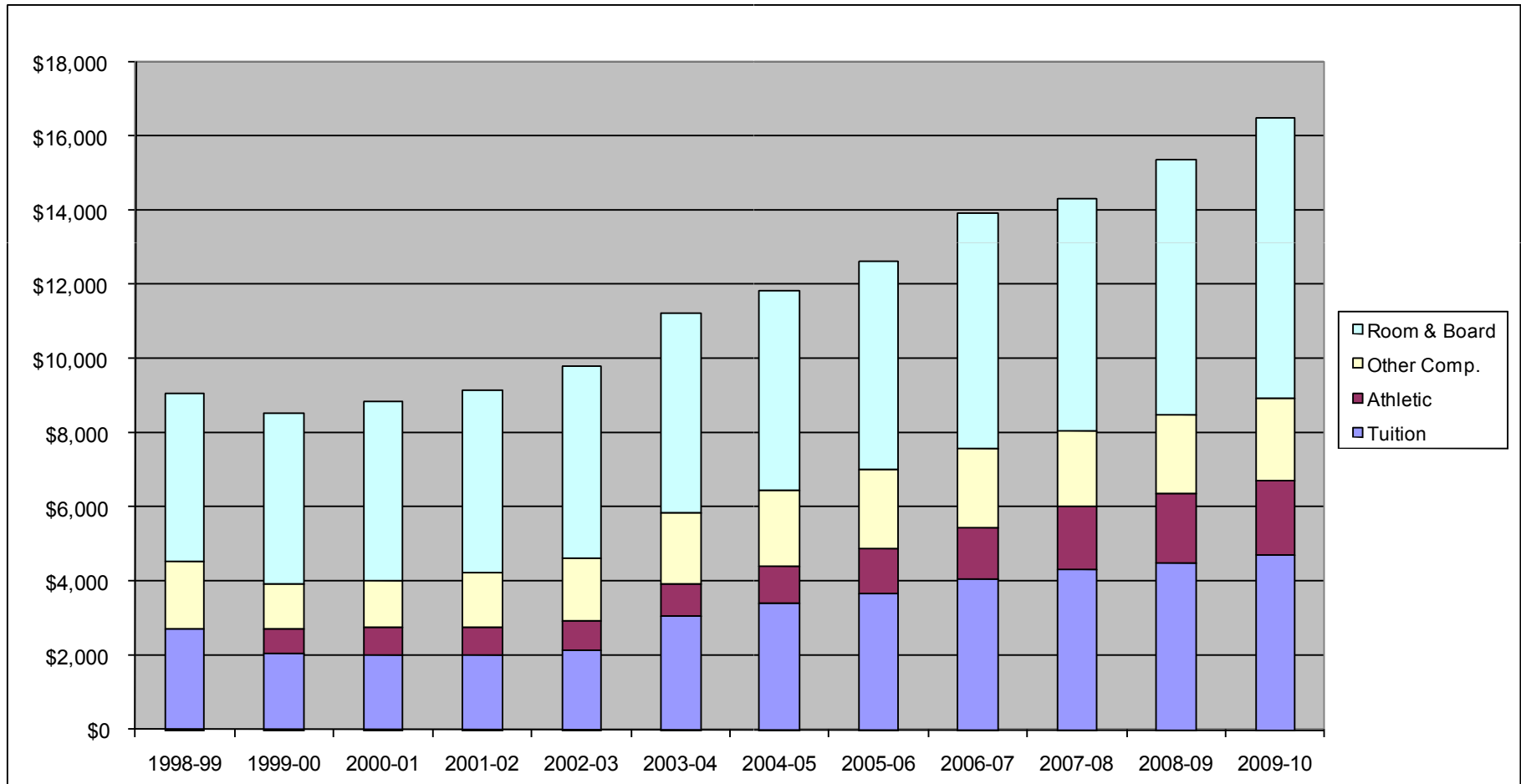


# Athletics

## as a percent of Comp Fee



# Components of Total Residential Cost



# Changes in Longwood Comp Fee 08-09 to 09-10

	2008-09	2009-10	Difference	% Increase
<b>Athletic</b>	\$ 1,876	\$ 2,009	\$ 133	7.1%
<b>Auxiliary Services</b>	770	825	55	7.1%
<b>Debt Service Reserve</b>	228	227	(1)	-0.4%
<b>Facilities/Building</b>	95	102	7	7.4%
<b>Golf Course</b>	47	27	(20)	-42.6%
<b>Health Service</b>	135	112	(23)	-17.0%
<b>Intramurals</b>	162	196	34	21.0%
<b>Parking/Auto Registration</b>	92	90	(2)	-2.2%
<b>Student Activity</b>	180	180	-	0.0%
<b>Student Union</b>	127	133	6	4.7%
<b>Telecommunications</b>	278	299	21	7.6%
<b>All fees</b>	\$ 3,990	\$ 4,200	\$ 210	5.3%

Source: SCHEV Report 2009-2010 tuition and fee report

# Are we pricing ourselves out of our traditional market?

- UVA \$17,962
- LU **\$16,521**
- GMU \$15,724
- VCU \$15,452
- VT \$14,429

## Appendix B

### 2009-10 Full-Time Resident Undergraduate Student Charges

Institutions	Tuition and Mandatory E&G Fees			Mandatory Non-E&G			Tuition and Total Mandatory Fees			Average Room and Board <sup>1</sup>			Total		
	Charge	% Incr	\$ Incr	Charge	% Incr	\$ Incr	Charge	% Incr	\$ Incr	Charge	% Incr	\$ Incr	Charge	% Incr	\$ Incr
George Mason University	\$5,840	5.7%	\$314	\$2,184	10.0%	\$198	\$8,024	6.8%	\$512	\$7,700	4.6%	\$340	\$15,724	5.7%	\$852
Old Dominion University	\$4,412	5.0%	\$209	\$2,906	7.0%	\$191	\$7,318	5.8%	\$400	\$7,526	5.5%	\$392	\$14,844	5.6%	\$792
University of Virginia	\$7,873	5.0%	\$375	\$1,799	-0.2%	(\$3)	\$9,672	4.0%	\$372	\$8,290	5.2%	\$410	\$17,962	4.6%	\$782
Virginia Commonwealth University	\$5,253	5.2%	\$261	\$1,864	4.3%	\$77	\$7,117	5.0%	\$338	\$6,335	5.3%	\$421	\$15,452	5.2%	\$759
Virginia Tech <sup>2</sup>	\$7,240	5.0%	\$345	\$1,365	4.8%	\$62	\$8,605	5.0%	\$407	\$5,824	6.4%	\$348	\$14,429	5.5%	\$755
College of William and Mary	\$6,483	4.9%	\$300	\$4,317	6.3%	\$254	\$10,800	5.4%	\$554	\$8,502	5.9%	\$472	\$19,302	5.6%	\$1,028
Christopher Newport University	\$4,414	4.9%	\$208	\$3,636	8.7%	\$292	\$8,050	6.6%	\$500	\$9,040	1.6%	\$140	\$17,090	3.9%	\$640
UVA-Wise	\$3,696	3.0%	\$107	\$3,052	7.1%	\$202	\$6,748	4.8%	\$309	\$7,770	8.4%	\$599	\$14,518	6.7%	\$908
James Madison University	\$3,734	5.0%	\$178	\$3,510	3.0%	\$102	\$7,244	4.0%	\$280	\$7,690	3.1%	\$232	\$14,934	3.6%	\$512
Longwood University	\$4,725	4.8%	\$216	\$4,200	5.3%	\$210	\$8,925	5.0%	\$426	\$7,596	10.8%	\$740	\$16,521	7.6%	\$1,166
University of Mary Washington	\$4,946	5.0%	\$235	\$2,166	5.0%	\$103	\$7,112	5.0%	\$338	\$7,462	6.0%	\$422	\$14,574	5.5%	\$760
Norfolk State University	\$2,952	6.2%	\$171	\$2,920	5.1%	\$141	\$5,872	5.6%	\$312	\$7,329	3.0%	\$213	\$13,201	4.1%	\$525
Radford University	\$4,396	5.0%	\$209	\$2,508	6.8%	\$159	\$6,904	5.6%	\$368	\$6,970	3.8%	\$254	\$13,874	4.7%	\$622
Virginia Military Institute	\$5,500	4.5%	\$238	\$5,690	7.5%	\$396	\$11,190	6.0%	\$634	\$6,792	5.4%	\$348	\$17,982	5.8%	\$982
Virginia State University	\$3,584	8.2%	\$271	\$2,590	0.0%	\$0	\$6,174	4.6%	\$271	\$8,050	4.4%	\$340	\$14,224	4.5%	\$611
Richard Bland College	\$2,666	2.1%	\$54	\$1,010	0.0%	\$0	\$3,676	1.5%	\$54	\$8,240	3.0%	\$240	\$11,916	2.5%	\$294
VA Community College System <sup>3,4</sup>	\$2,767	7.7%	\$197	\$14	0.0%	\$0	\$2,781	7.6%	\$197	NA	N/A	N/A	\$2,781	7.6%	\$197
Average 4-Year Institutions	\$5,003	5.1%	\$242	\$2,980	5.6%	\$159	\$7,984	5.3%	\$401	\$7,658	5.2%	\$378	\$15,642	5.2%	\$779
Average 2-Year (RBC&VCCS) <sup>5</sup>	\$2,716	4.8%	\$125	\$512	0.0%	\$0	\$3,229	4.0%	\$125	N/A	N/A	N/A	\$7,349	3.5%	\$245
Average All Institutions	\$4,734	5.1%	\$229	\$2,690	5.5%	\$140	\$7,424	5.2%	\$369	\$7,695	5.0%	\$369	\$14,666	5.1%	\$717

Notes:

<sup>(1)</sup> Charges listed here represent the weighted average double occupancy room charge and the maximum weekly meal plan offered, not necessarily the plan used by most students.

<sup>(2)</sup> The rate is net of \$130 Board-approved "mitigation grant" related to the American Recovery and Reinvestment Act.

<sup>(3)</sup> Northern Virginia Community College (NVCC) and J. Sargent Reynolds Community College (JSRCC) have tuition differentials in addition to the systemwide tuition. NVCC has extra \$340.50 and JSRCC has extra \$33 per year.

<sup>(4)</sup> Other mandatory fees vary by institution, ranging from \$30.00 to \$625.50 per academic year, and are not included in this summary.

# Comparison of Tuition & All Fees: Longwood vs. Peer Institutions

Academic Year	Number of Peers	Longwood Cost Tuition & Comp Fee	Peer Average	% Difference
2002-03	15	\$4,983	\$4,668	6.70%
2003-04	15	\$5,877	\$5,477	7.90%
2004-05	15	\$6,441	\$5,794	11.70%
2005-06	15	\$7,020	\$6,090	15.30%

# Is Athletic Fee a significant problem?

Athletic Fee as a Percentage of Comprehensive Fee			
LONGWOOD	\$2,009	\$4,200	47.8%
NSU	\$1,372	\$2,919	47.0%
RADFORD	\$1,027	\$2,508	40.9%
ODU	\$1,074	\$2,905	37.0%
UVA	\$621	\$1,799	34.5%
JMU	\$1,113	\$3,510	31.7%
CNU	\$1,132	\$3,636	31.1%
UVA-WISE	\$950	\$3,052	31.1%
W&M	\$1,324	\$4,317	30.7%
VSU	\$791	\$2,590	30.5%
VCU	\$559	\$1,864	30.0%
GMU	\$511	\$2,184	23.4%
VMI	\$1,298	\$5,690	22.8%
VT	\$232	\$1,365	17.0%
Univ. of Mary Wash	\$348	\$2,166	16.1%
Richard Bland College	\$40	\$1,010	4.0%

# Is the Athletic Fee tail wagging the dog of total cost?

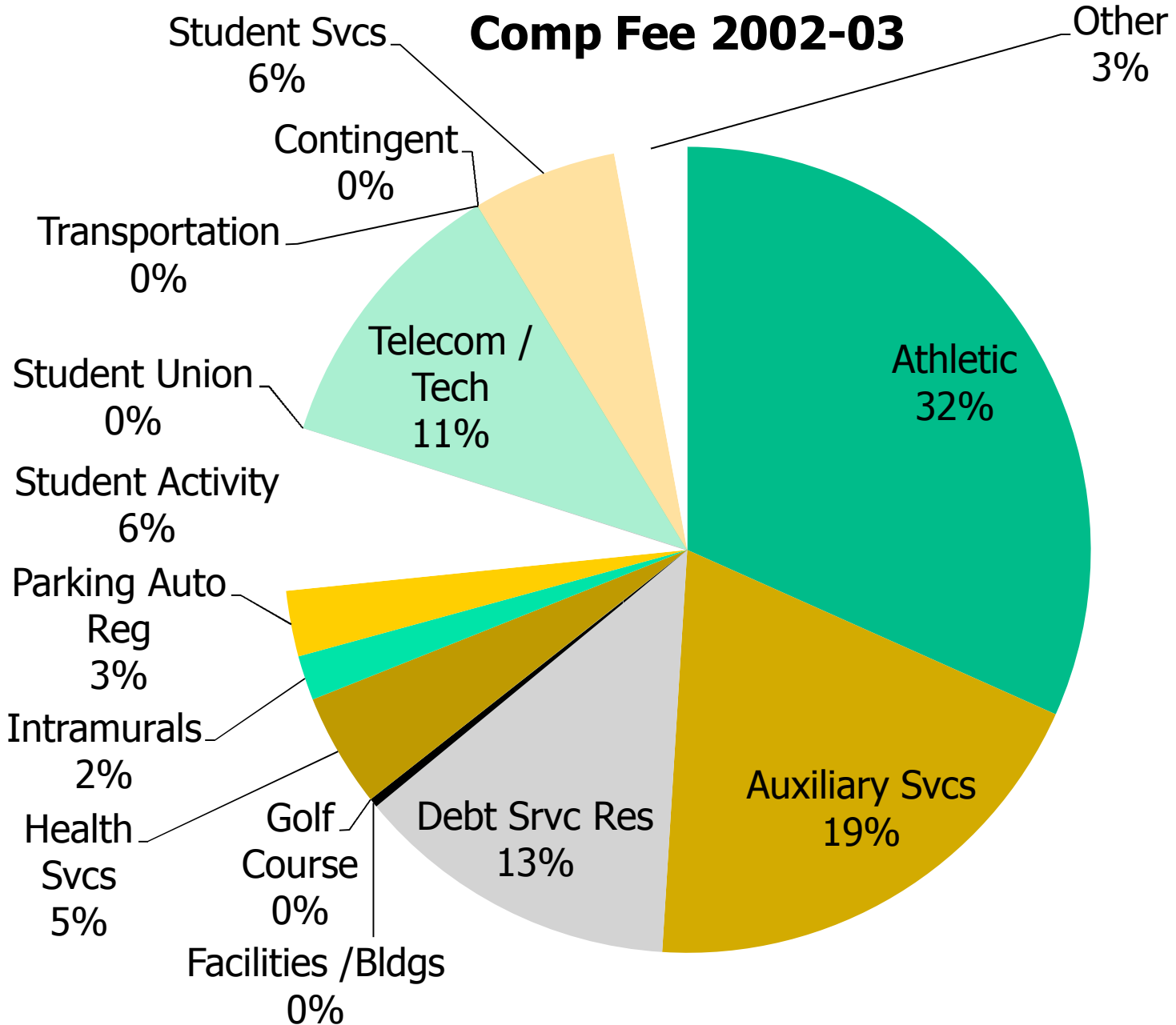
**Top 5 In Combined Tuition & Comp Fee With Athletic Fee as Percentage of Total**

	Tuition	Comp Fee	Athletic Part of Comp Fee	Total Tuition & Comp Fee	Athletic Fee as % of Total Tuition & Comp Fee
VMI	\$5,500	\$5,690	\$1,298	\$11,190	11.6%
William & Mary	\$6,483	\$4,317	\$1,324	\$10,800	12.3%
UVA	\$7,873	\$1,799	\$621	\$9,672	6.4%
Longwood	\$4,725	\$4,200	\$2,009	\$8,925	22.5%
VT	\$7,240	\$1,365	\$232	\$8,605	2.7%

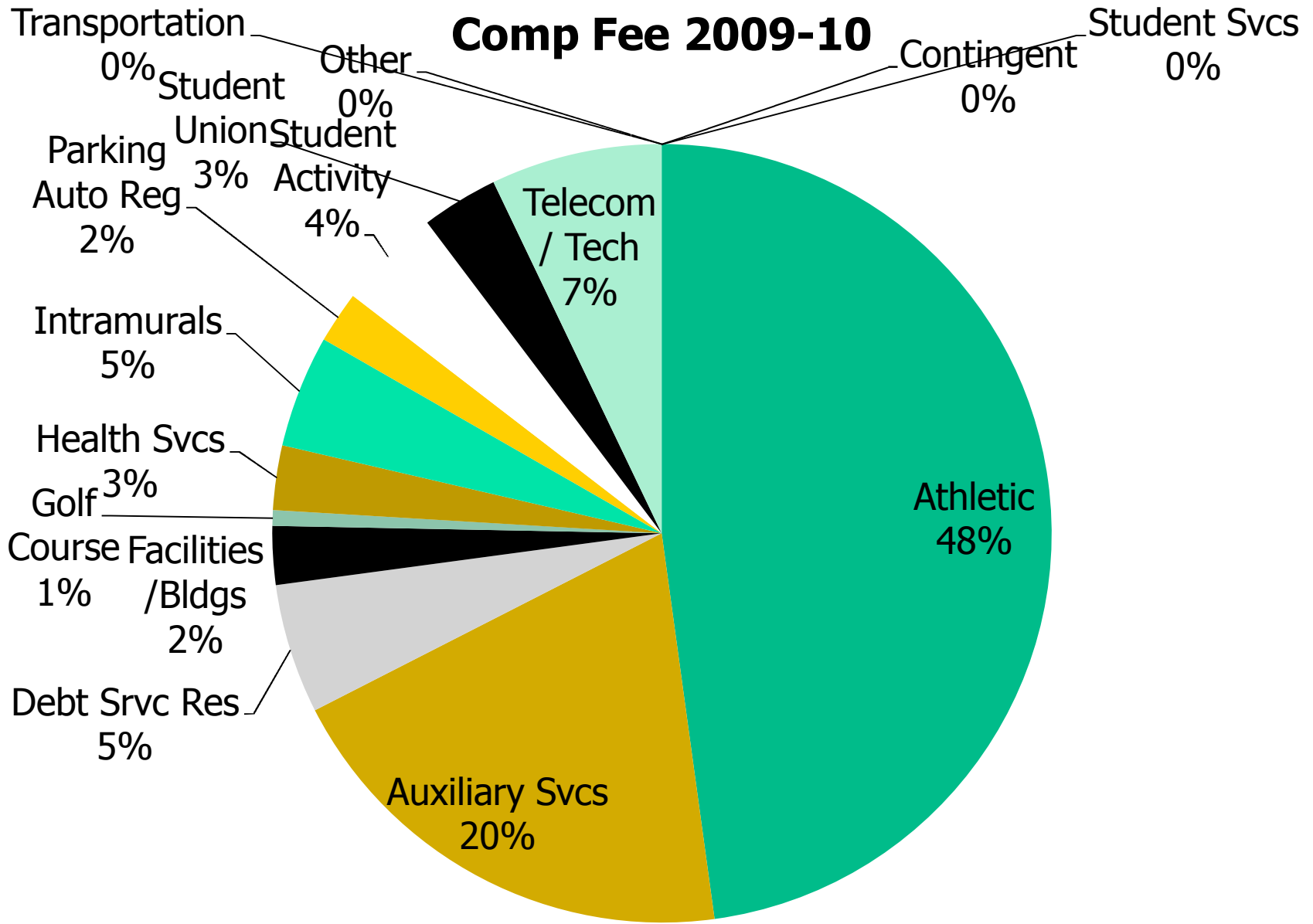
# Only Norfolk State is higher: percent Athletics of total fees

	Athletic	Comp	% of Comp	Tuition	Tuition & Comp	Athletics as % of Total Fees
VMI	\$1,298	\$5,690	22.8%	\$5,500	\$11,190	11.6%
W&M	\$1,324	\$4,317	30.7%	\$6,483	\$10,800	12.3%
UVA	\$621	\$1,799	34.5%	\$7,873	\$9,672	6.4%
<b>LONGWOOD</b>	<b>\$2,009</b>	<b>\$4,200</b>	<b>47.8%</b>	<b>\$4,725</b>	<b>\$8,925</b>	<b>22.5%</b>
VT	\$232	\$1,365	17.0%	\$7,240	\$8,605	2.7%
CNU	\$1,132	\$3,636	31.1%	\$4,414	\$8,050	14.1%
GMU	\$511	\$2,184	23.4%	\$5,840	\$8,024	6.4%
ODU	\$1,074	\$2,905	37.0%	\$4,412	\$7,317	14.7%
JMU	\$1,113	\$3,510	31.7%	\$3,734	\$7,244	15.4%
VCU	\$559	\$1,864	30.0%	\$5,253	\$7,117	7.9%
Univ. of Mary Wash	\$348	\$2,166	16.1%	\$4,946	\$7,112	4.9%
RADFORD	\$1,027	\$2,508	40.9%	\$4,396	\$6,904	14.9%
UVA-WISE	\$950	\$3,052	31.1%	\$3,696	\$6,748	14.1%
VSU	\$791	\$2,590	30.5%	\$3,584	\$6,174	12.8%
NSU	\$1,372	\$2,919	47.0%	\$2,952	\$5,871	23.4%
Richard Bland College	\$40	\$1,010	4.0%	\$2,666	\$3,676	1.1%

# Comp Fee 2002-03



# Comp Fee 2009-10





# Dollars Spent Per Student

Budget Category	Budget Amount	Number of Students	Dollars Spent Per Student
Total University Budget	\$86,572,360	4098	\$21,126
E&G and Comp Fee	\$64,390,158	4098	\$15,713
E&G	\$47,651,409	4098	\$11,628
Instruction	\$20,815,888	4098	\$5,080

Athletic Budget Showing Dollars Spent Per Athlete			
Budget Category	Budget Amount	Number of Athletes	Dollars Spent Per Athlete
Athletic Budget	\$7,437,523	218	\$34,117



# Student : Staff ratios

University Student-to-Employee Ratios By Category

Employee Category	Number of Employees	Number of Students	Student to Employee Ratio
All University Employees	674	4098	6
Faculty	208	4098	20

Athlete-to-Employee Ratios By Category

Employee Category	Number of Employees	Number of Athletes	Athlete-to-Employee Ratio
Total Athletic Staff	52	218	4
Coaching Staff	29	218	8

# To Sum Up Where We Are

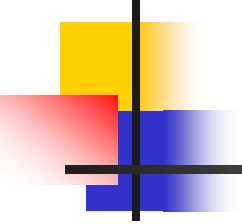
- \$2.7 million cut in FY10 Budget
- Additional \$3.5 million cut in FY10
- \$304,000 from Auxiliary Budget
- The Balance from E&G Budget



---

- Proposed Increases In Tuition

- No current scenario addresses the FY12 and FY13 deficits sufficiently
- Without corresponding cuts in Comp Fee, we may price ourselves out of our market
- Only area within Comp Fee that has seen meteoric growth is the Athletic budget

- 
- 
- Matching tuition increases with corresponding Comp Fee decreases maintains our competitiveness
    - The Athletic budget has become the driving force of the total size of the Comp Fee
    - Therefore...

**8% Tuition Increase with Corresponding Decrease in Athletic Component of  
Comp Fee**

<b>Tuition</b>	<b>Comp Fee</b>	<b>Total</b>	<b>Increased Cost to Student</b>	<b>Deficit/Surplus in FY11</b>	<b>Deficit / Surplus in FY12</b>	<b>Deficit / Surplus in FY13</b>
<b>\$5,103</b>	<b>\$3,822</b>	<b>\$8,925</b>	<b>\$0</b>	<b>-\$152,650</b>		
<b>\$5,511</b>	<b>\$3,414</b>	<b>\$8,925</b>	<b>\$0</b>		<b>-\$2,828,179</b>	
<b>\$5,951</b>	<b>\$3,414</b>	<b>\$9,365</b>	<b>\$440</b>			<b>-\$2,133,825</b>

No effect on FY12 or FY13 deficit, but increases are cost-neutral to students in FY11 & 12 thus keeping Longwood competitive in terms of cost.

12%FY11, 10%FY12, 10%FY13 Tuition Increase with Corresponding Decrease In Athletic Component of Comp Fee in FY11 and Partial Corresponding Athletic Decrease in FY12

Tuition	Comp Fee	Total	Increased Cost to Student	Deficit/Surplus in FY11	Deficit / Surplus in FY12	Deficit / Surplus in FY13
\$5,287	\$3,638	\$8,925	\$0	\$703,684		
\$5,820	\$3,420	\$9,240	\$315		-\$1,407,957	
\$6,414	\$3,420	\$9,834	\$909			-\$56,831

FY12 & FY13 deficits are reduced. Increase in FY11 is cost-neutral to students due to decrease in athletic component of Comp Fee by \$562 to match increase in tuition. Increased cost to students in FY12 is minimized due to decrease in athletic component of Comp Fee by \$218. Athletic budget is at 2005-06 level by FY12

16%FY11, 8%FY12, 8%FY13 Tuition Increases With Corresponding Decrease in Athletic Component of Comp Fee in FY11

Tuition	Comp Fee	Total	Increased Cost to Student	Deficit/Surplus in FY11	Deficit / Surplus in FY12	Deficit / Surplus in FY13
\$5,509	\$3,416	\$8,925	\$0	\$1,638,880		
\$5,950	\$3,416	\$9,366	\$441		-\$853,346	
\$6,426	\$3,416	\$9,842	\$917			\$41,210

Increase in tuition sharply cuts FY12 deficit and eliminates the FY13 deficit. Increased tuition in FY11 is offset by corresponding cut in athletic component of Comp Fee, thus the increase is cost-neutral to students in FY11. This scenario produces the least effect on students cost to attend while making serious progress on the deficit.

16%FY11, 8%FY12, 8%FY13 Tuition Increases

With Corresponding Decrease in Athletic Component of Comp Fee in FY11  
Assumes State Takes All \$3.1 Million of Stimulus Money in FY11 Because of the  
16% Increase

Tuition	Comp Fee	Total	Increased Cost to Student	Deficit/Surplus in FY11	Deficit / Surplus in FY12	Deficit / Surplus in FY13
\$5,509	\$3,416	\$8,925	\$0	-\$1,530,788		
\$5,950	\$3,416	\$9,366	\$441		-\$853,346	
\$6,426	\$3,416	\$9,842	\$917			\$41,210

Increase in tuition sharply cuts FY12 deficit and eliminates the FY13 deficit. Increased tuition in FY11 is offset by corresponding cut in athletic component of Comp Fee, thus the increase is cost-neutral to students in FY11. This scenario produces the least effect on students cost to attend while making serious progress on the deficit. If the State withholds all stimulus funds because of the 16% increase, there will be a deficit in FY11 of \$1.5 million

16%FY11, 8%FY12, 8%FY13 Tuition Increases

With Corresponding Decrease in Athletic Component of Comp Fee in FY11  
Assumes State Takes Half of the \$3.1 Million of Stimulus Money in FY11 Because  
of the 16% Increase

Tuition	Comp Fee	Total	Increased Cost to Student	Deficit/Surplus in FY11	Deficit / Surplus in FY12	Deficit / Surplus in FY13
\$5,509	\$3,416	\$8,925	\$0	\$54,046		
\$5,950	\$3,416	\$9,366	\$441		-\$853,346	
\$6,426	\$3,416	\$9,842	\$917			\$41,210

Increase in tuition sharply cuts FY12 deficit and eliminates the FY13 deficit. Increased tuition in FY11 is offset by corresponding cut in athletic component of Comp Fee, thus the increase is cost-neutral to students in FY11. This scenario produces the least effect on students cost to attend while making serious progress on the deficit. If state withholds ½ of stimulus money in FY11 due to the 16% increase, there will still be a slight surplus on FY11 of \$54,000

# Increases ABOVE 10% At Other Schools in Recent Years

2008-09	
VT	10.80%
W&M	11.80%
Richard Bland	15.30%
2006-07	
CNU	10.90%
UVA-W	12%
Radford	12%
VSU	12.50%



# Proposal For Discussion

---

- The Faculty Ask The Administration:
  - To link increases in tuition to cuts in athletics to maintain competitiveness
  - To the greatest extent possible, the combined tuition increases and athletic cuts should address the deficit in FY12 and FY13
  - Maintain the CORE MISSION of Longwood



# Discussion

---

- Thank You